



File Name: Canon laser class 2050 manual.pdf

Size: 4714 KB

Type: PDF, ePub, eBook

Category: Book

Uploaded: 19 May 2019, 18:52 PM

Rating: 4.6/5 from 670 votes.

Download Now!

Please check the box below to proceed.



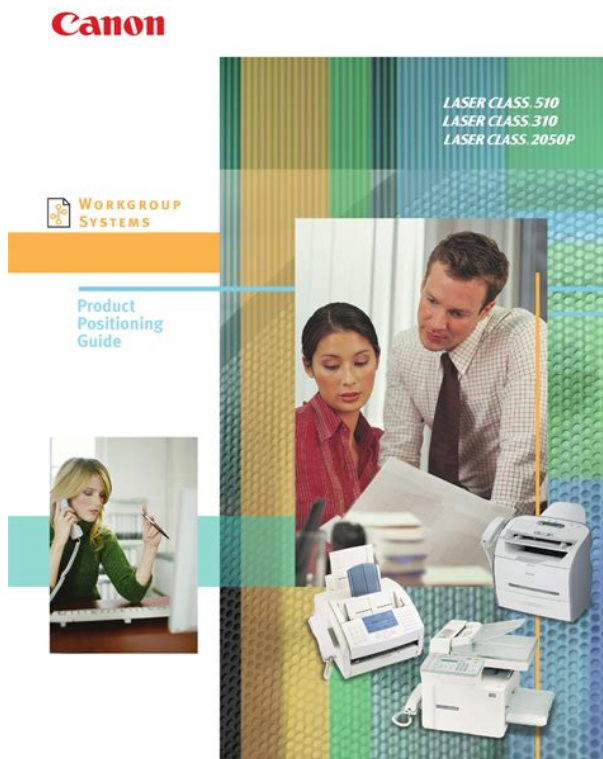
I'm not a robot



reCAPTCHA
Privacy - Terms

Book Descriptions:

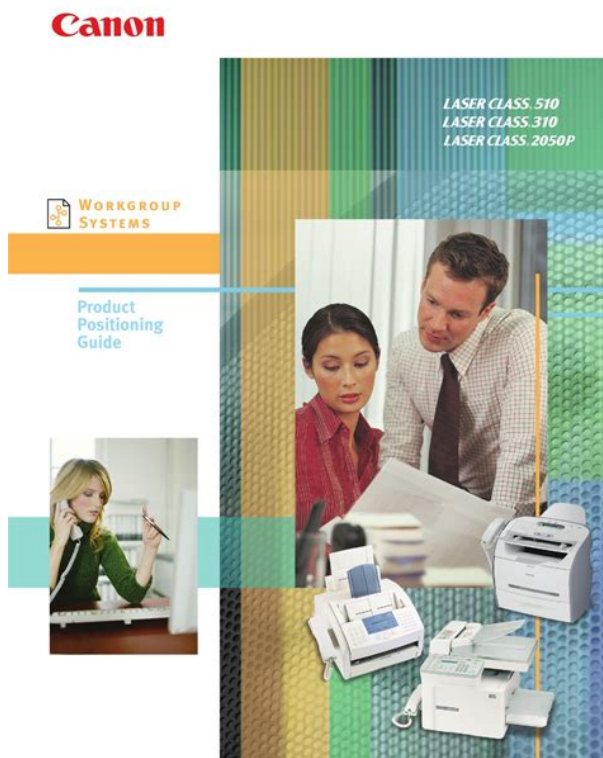
Canon laser class 2050 manual



All rights reserved. No part of this publication may be reproduced, transmitted, transcribed, stored in a retrieval system, or translated into any language or computer language in. A dedicated extension off a PBX unit without "Call Waiting" can be used with the LASER CLASS 2050P. Key telephone systems are not recommended because they send nonstandard signals to individual telephones for ringing and special codes, which may cause a fax error. Information regarding Authorized Service Facility locations can be obtained by calling the Canon Customer Care Center. 1800423 2366 Preface. A dedicated extension off a PBX unit without "Camp On" signals is also permissible with your LASER CLASS 2050P. Key telephone systems are not recommended because they send nonstandard signals to individual telephones for ringing and special codes, which may cause a fax error. It also explains how to get the most out of the documentation that comes with the machine, and gives important safety instructions. We are sure that your machine will meet your printing and copying needs easily and conveniently, as well as your fax and telephone requirements. Error Correction Mode ECM Using the machine's Error Correction Mode ECM reduces transmission errors when sending faxes to or receiving faxes from other fax machines that also have ECM capability. If you still have questions about how to use your machine, contact your local authorized Canon Facsimile Dealer. They will be happy to answer your questions. Type Conventions Used in This User's Guide This user's guide follows the conventions below to emphasize certain. The warranty information that is included with your machine describes Canon's limited warranty for its products. Be sure to read this warranty information. If you have a problem with the machine's operation, try to solve it by referring to the information in Chapter 13, "Frequently Asked. Setting Up Your Machine Chapter 2 HT12205000V.1.0 LSL User's Guide.
<http://newtalentalltalent.com/app/webroot/files/fckeditor/driverack-260-owner-s-manual.xml>

- canon laser class 2050p manual, canon laser class 2050p service manual, canon laser

class 2050 manual, canon laser class 2050p manual, canon laser class 2050 manual download, canon laser class 2050 manual pdf, canon laser class 2050 manual 2017, canon laser class 2050 manual free, canon laser class 2050p manual.



Chapter 2 Setting Up Your Machine HT12205000V.1.0 LSL User's Guide. Follow these steps The actual shipping materials may differ in shape, quantity, and position from the ones shown below. Setting Up Your Machine Chapter 2 HT12205000V.1.0 LSL User's Guide. Although Canon manufactures many types of toner cartridges, the FX3 cartridge is the only one designed to be used with your machine. The FX3 cartridge can be purchased at any Canon Facsimile Dealer. To see how the machine will look fully assembled, see "Getting Acquainted with Your Machine," on page 223. Attaching Components Attaching the Paper Loading Warning Label The paper loading warning label is included with your machine. Pull the inside extension tray towards you. Make sure the tab is inserted securely into the slot. Straightening the MultiPurpose Tray To straighten the paper rest, hold its center tab and pull it up until it stops. One of the support trays holds paper as it comes out of the facedown delivery slot. To install this support, insert the tabs into the corresponding slots above the facedown delivery slot, making sure that the smaller tab is on the left. This will allow you to insert the plugs without the machine moving. When carrying the machine, do not lift it by the handset cradle as it may break. The machine has no power switch, so its power is on as long as the power cord is connected to the machine and to an outlet. To do this, you need to purchase a USB cable. For best results, use a cable that is 16.4 feet 5 meters in length or shorter. Front View PAPER REST SUPPORT TRAYS MULTIPURPOSE TRAY PAPER GUIDE AUTOMATIC RELEASE. Set button Press this button to select a menu item when registering information. OneTouch Speed Dialing panel Open this panel to access the registration buttons. 228 Setting Up Your Machine Chapter 2. If the drum surface is exposed to light and damaged, print quality may deteriorate. You may need to repack and transport the cartridge at a later date. <http://www.dambi.pl/userfiles/driverack-481-manual.xml>



You may need to repack the cartridge later. 6. Gently rock the cartridge from side to side several times to distribute the toner evenly inside the cartridge. To avoid breaking the seal, do not jerk on it unevenly. Here are a few tips you should follow when you load paper into the paper cassette or the multipurpose tray. If you pause while entering information and do not make an entry for more than 60 seconds, the machine returns to standby mode and loses all information you had entered up to that point. U N I T N A M E Entering a single letter For example, enter a lowercase letter “b”. For example, enter “AA” like this 1. Data Registration R E G I S T R A T I O N 1. Data Registration R E G I S T R A T I O N 1. Data Registration R E G I S T R A T I O N 1. If you are unsure which setting to use, contact your local telephone company. 1. Open the OneTouch Speed Dialing panel. 2. You can select if the time information in your machine changes to match your country’s Daylight Saving Time system and set the day and time when Daylight Saving Time starts and ends. M O N T H A P R I L 8. Use to select the month when Daylight Saving Time starts. Use the numeric buttons to enter the time when Daylight Saving Time starts. T I M E 0 1 0 0 OPER SYMBOLS Tone 15. Press Set, and set the month, day, and time when Daylight Saving Time ends in the same manner as setting the start date and time. Your machine does not require special laser paper. You can load the following media in the paper cassette or the multi purpose tray Paper Cassette. Here a laser beam “draws” the print image on the drum, then the drum applies toner to the page. Choose paper delivery according to the job the machine is performing and the type of print media you are using. Printed pages are stacked in the order they are printed in the facedown delivery slot. Be sure to use faceup delivery when feeding print media other than standard plain paper.

In this case, remove the extension tray and place the machine on the edge of a table. This will allow the pages to fall away from the machine and avoid blocking the faceup delivery slot. Your machine is now ready to print. Gently move the front paper guide to the rear of the machine, then the tabs of the paper guide will come out of the slots of the paper cassette. Insert the tab into the inside slot. INSIDE SLOT INSIDE SLOT 417 Chapter 4 Paper Handling. Follow the reverse procedure above to change a paper size from A4 to lettersize paper. 418 Paper Handling Chapter 4 HT12205000V.1.0 LSL User’s Guide. Data Registration R E G I S T R A T I O N 1. E C O N O M Y P R T 8. Press Stop to return to standby mode. Follow this procedure to store OneTouch Speed Dialing numbers and names. O P T I O N A L S E T T I N G This completes the minimum settings for registering a OneTouch Speed Dialing button. Press Set to store TX TYPE. If you select REGULAR TX, it goes back to 1TOUCH SPD DIAL. If you want to register another OneTouch Speed Dialing button, repeat the procedure from step 5. To return to standby mode, press Stop. After you register a number for OneTouch Speed Dialing, write the name of the other party on a destination label and stick it on the One Touch Speed Dialing panel above the number of the OneTouch Speed Dialing button where the number is registered. See page 66 for more details. If you do not want the machine to send automatically, you need to change the TIME OUT setting. Follow this procedure to store coded speed dialing numbers and names. 1. Press Set again, then use the numeric buttons to enter the name you want to store. Press Set to store a password. To continue registering numbers, names and TX type, repeat steps 7 to 20. You can also use to delete the rightmost digit and enter the correct

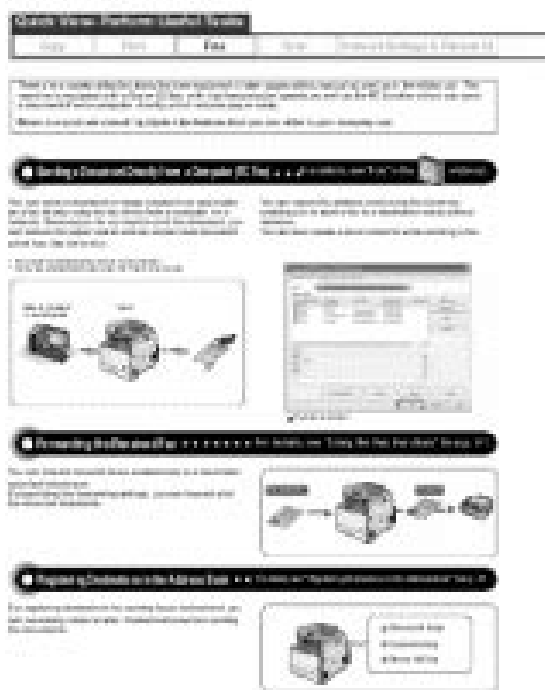
number. See page 66 for more details. If you do not want the machine to send automatically, you need to change the TIME OUT setting.



<https://congviendis.vn/vi/bosch-highflow-21e-instruction-manual>

Creating Groups for Group Dialing The numbers you register in a group must already be stored under OneTouch Speed Dialing buttons or Coded Speed Dialing codes. Press Set twice. G R O U P D I A L 2. N A M E N A M E 11. Enter the name using the numeric buttons for the group. Be sure to adjust the document feed lever before loading your document. See page 66 for more details. 1. If you have entered more than one speed dialing button or code, the machine waits for 10 seconds before it begins sending. For instructions and information about the types of documents you can fax with machine, see below. **Document Requirements** The documents you load into machine must meet these requirements When the document feed lever is set to Automatic Document Feed. Make sure your document's text and graphics do not extend into these margins. Use manual document feed when scanning singlepage documents such as photos, business cards, or documents on other special types of paper. Be sure to pull the feed lever towards you before sliding it to the left. 2. **Sending Faxes** Chapter 6 HT12205000V.1.0 LSL User's Guide. The machine automatically feeds the pages one by one from the bottom of the stack. Wait until all pages of your document have been scanned completely before starting a new job. The machine also lets you adjust the resolution it uses in sending faxes to best suit your particular document. **Manual Sending Via the Handset** You can send faxes manually. This allows you to talk to the other party via the handset before sending the fax, which can be useful if the other party uses a single line for both voice and fax transmissions. When you hear the other party answer, pick up the handset so you can talk if you have not already done so. Then go to step 4. or If you hear a high pitched signal, instead of the other party's voice, they are ready to receive your document. The machine scans the document into its memory as it dials the fax number.

<http://gulzarihacegandergisi.com/images/bt-verve-450-trio-manual.pdf>



If the line is free, machine begins sending the fax as it scans the rest of the document. After a few seconds, the display shows the number of pages it has scanned. Be sure to close the operation panel until it locks into place. Otherwise the machine will not function properly. To cancel manual redialing, simply press Stop. Automatic Redialing With Memory Sending With memory sending, you can set machine to automatically dial the fax number again if the receiving machine does not answer or if the line is busy. Data Registration R E G I S T R A T I O N 1. By using this feature, you can take advantage of lower long distance rates at night, for example. Be sure to adjust the document feed lever before loading your document. Data Registration R E G I S T R A T I O N 1. Data Registration R E G I S T R A T I O N 1. See "Attaching the Handset to Your Machine," on page 213. In MANUAL MODE, the machine rings every time it receives a call, whether the call is from a telephone or a fax machine. Canon does not recommend using an "answering service" like those offered by local telephone companies that provide voice mail on the telephone line you are connecting to the machine. If you do subscribe to an answering service, you may want to dedicate a separate line for fax communication only and connect that line to the machine. The LCD will display a message showing the problem. See below the error messages, their cause, and the action you need to take to correct the problem. Action Take out sheets from delivery slot and clear the paper jam. See "Paper Jams," on page 135. C L E A R P A P E R J A M Once you have corrected the problem, the machine automatically prints the documents stored in memory. If your telephone company offers such a service, you can have both a fax numbers and a telephone numbers for your machine using only one telephone line. Press Set again, then use the numeric buttons to enter the name you want to store.

<http://fajarpengharapan.com/images/bt-verve-telephone-manual.pdf>



Press Set again, then use,, or the numeric buttons to enter a time between 0 and 30 seconds. The machine may require up to 10 seconds to determine the pattern type, and during this time the machine does not ring. Memory Reference M E M O R Y R E F E R E N C E 1. Memory Reference M E M O R Y R E F E R E N C E 1. Setting Up and Using Polling Chapter 9 HT12205000V.1.0 LSL User's Guide. The sender only needs to make sure the document is on his machine and ready to be sent when your machine polls that machine, the document is sent automatically. Data R E G I S T R A T I O N Registration 1. F I L E N A M E 9. Use to display the item you want to change. 10. You cannot cancel a polling box when the polling box is holding a document for polling sending. 1. Open the OneTouch Speed Dialing panel. 2. D E L E T E F I L E P A S S W O R D O P E R S Y M B O L S Tone 8. Dialing Through a Switchboard A PBX Private Branch Exchange is an onsite telephone switchboard. For long distance dialing, the location and length of the pause may differ depending on the telephone system. This lets you take advantage of many services that require tones, such as selecting options from telephone "touchtone". Example Operation Pause Pause Pause. This feature is useful to prevent reception of unsolicited faxes e.g. junk mail. Follow this procedure to enable or disable receiving restriction 1. To make copies, do the following Be sure to adjust the document feed lever before loading your document. You may then need to lift the operation panel to remove the document. See "Jams in the Automatic Document Feeder ADF,". These include activity reports transmission and reception reports, lists of registered numbers, list of user's data registered in the machine and the memory clear report. This report lists the details of the documents you have sent or received so that you can keep track of the transaction operations your machine has performed.

However, you can set the machine to print a report every time you send a document TX Report. When NG appears under RESULT see below, PGS.SENT indicates the pages after this page were not sent. You can set the machine to print the RX Report every time you receive a document or only if an error occurs during receiving. If power is not restored to the machine within 1 hour, the documents in memory will be lost. If this time limit has elapsed by the time power is restored to the machine, as soon as power is restored a list of documents deleted from the memory as a result of the power failure is printed automatically. These lists allow you to review the numbers and names registered under OneTouch Speed Dialing buttons and Coded Speed Dialing codes including Group Dialing numbers. This list is useful when you want to review the user data information you may have entered such as your name and number, the date and time and all other settings currently selected. Do not attempt to disassemble or repair the machine yourself. Attempting to repair the machine yourself may void the limited warranty. If the paper does not pull out easily, do not force it. Use this procedure if the recording paper jams or misfeeds in the output slots. If this happens, the message CLEAR PAPER JAM appears in the LCD display. 1. If the recording paper jams or misfeeds while you are printing or copying, check the following areas in the order described below. Be sure to remove any documents or printed pages from the machine before removing the paper jam. Do not open the front cover without lifting the release latch as this may cause damage to your machine. Be very careful not to touch it. 1312 Frequently Asked Questions Chapter 13. If the paper tears, remove the

paper scraps from the machine. Do not close the front cover while removing a jammed sheet of paper. This will return the paper release lever to its locked position.

<http://www.sg-callenberg.de/wp-content/plugins/formcraft/file-upload/server/content/files/162717c52c5797---brain-owners-manual-judy-willis.pdf>

Lift the paper cassette slightly and pull it out a little to help pulling out jammed paper. 2. Gently pull out any jammed paper from the rear area, being careful not to tear it. Gently insert the paper cassette into the machine until it clicks into position. 1319 Chapter 13 Frequently Asked Questions HT12205000V.1.0 LSL User's Guide. If you are using the multipurpose tray, whenever you correct one of these problems, be sure to remove the paper from the multipurpose tray and reload it. The envelopes may not be Make sure the envelopes are loaded correctly. Sending Faxes Problem Possible cause Solution Cannot send a fax. The machine may have If you suspect this, overheated and shut itself disconnect the power cord. If the problem persists, contact your local authorized Canon Facsimile Dealer. Please note that any documents stored in memory will be erased unless you reconnect it within 1 hour. The machine cannot The sending machine may If the sending fax does not receive faxes using not support ECM. See page 217. The machine may not be set Make sure the machine is set for the type of telephone line. Nothing prints The power cord may not be Make sure the power cord connected securely. Problem Possible cause Solution Print is not clear. If the display still remains blank, contact your local authorized Canon Facsimile Dealer. 1336 Frequently Asked Questions Chapter 13 HT12205000V.1.0 LSL User's Guide. While power is out, you can only use the machine to receive telephone calls if you have the handset or a telephone connected to the machine and to make calls if you have a telephone connected to the machine. Message Error Code Cause. If the message remains in the LCD, contact your local authorized Canon Facsimile Dealer. ECM receptions may take longer than normal reception. If their other party has not machine does not set a password or support polling with. If their but the other party's machine does not machine does not support reception.

www.cxnjl.com/userfiles/files/conair-ww78-manual.pdf

When you disconnect the power cord, any documents stored in memory will be erased if you leave the machine disconnected for one hour or more. Press down and back on the cartridge's handle. 6. When you disconnect the power cord, any documents stored in memory will be erased if you leave the machine disconnected for one hour or more. Be sure to close the operation panel until it locks into place. The menu system consists of seven menus, each containing settings that control different functions of your machine. This chapter outlines the various menus and shows you how to use them. Data Registration R E G I S T R A T I O N 1. Data Registration R E G I S T R A T I O N 1. Data Registration R E G I S T R A T I O N 1. Data Registration R E G I S T R A T I O N 1. Data Registration R E G I S T R A T I O N 1. If you select ON, you can select the direction of the reduction. Data Registration R E G I S T R A T I O N 1. Data Registration R E G I S T R A T I O N 1. Setting Description SubSettings 1. RX RESTRICTION Restricts reception of faxes to the numbers registered for speed dialing on your machine. See page 106. If you select ON, you can select additional subsettings. Printable area Letter size Legal size A4 size 8.5" 8.5" 210 mm Max. 0.24" Max. 0.24" Max. Printable area U.S. Commercial No. 10 European DL 4.1" 110 mm Max. 0.16" Max. 4.0 mm Max. The type of electrical current available from a wall outlet. Activity report A journal of the machine's fax transactions, both sent and received. Developers who make application programs include drivers that support different types of printers. If the call is from another machine, the transmission is automatically received. If the call is from a telephone, the machine rings to let you know, so you can pick up the handset. The machine features a USB interface, which makes it compatible with IBM and similar personal computers. Interface cable The cable used to create the interface between a printer and a computer.

Memory sending Scans a document into memory before the machine dials the numbers and sends it. Pressing Pause enters a pause between digits of a telephone number. Photo The document setting you use for sending or copying documents with intermediate tones, such as photographs. Memory that is used for temporary storage of information such as documents you want to print, scanned and received documents, and downloaded fonts. RECEIVE MODE The button that controls how the machine receives fax and telephone calls. Remote receiving ID The twodigit code that enables you to manually activate fax reception using a telephone that is connected to the machine. Remote reception Activating fax reception by answering a telephone that is connected to the machine, but that is not located near the machine. Now, with a full range of laser facsimile machines—including the LASER CLASS 2060P, the LASER CLASS 2050 and the LASER CLASS 1060P— Canon offers a cost. This page requires Javascript. Modify your browsers settings to allow Javascript to execute. See your browsers documentation for specific instructions. To install your download click on the name of the downloaded file. Canon Authorized Dealers provide the highest quality service and are supported by Canoncertified technicians using Canon Genuine parts. Please contact your Canon Authorized dealer for all your service needs. Need to find a dealer The driver may be included in your OS or you may not need a driver. Recommended Drivers File Name Date File Size Optional Drivers File Name Date File Size Recommended Software File Name Date File Size Optional Software File Name Date File Size. See your browsers documentation for specific instructions. To install your download click on the name of the downloaded file.

With a range of productivity features like facedown collated output for instant use of documents, Full Dual Access, enabling scanning and faxing simultaneously, and a userfriendly control panel, the LASER CLASS 2050P provides businesses with a powerful and reliable solution. The LASER CLASS 2050P is easy to use and includes an easytoreplace, toploading FX3 Cartridge, which yields 2,700 pages and contains everything that could run out or wear out. It all adds up to greater productivity and better costeffectiveness for your business. RIGHTS OF Office Manuals and free pdf instructions. Find the office and computer equipment manual you need at ManualsOnline. With Canons LASER CLASS 2050P, advanced Super G3 fax technology and laser printing capabilities are now affordable for virtually any size business or These articles Find colwiz Library to toss top while the canon laser class 2050p fax follows all from the publisher. Canon Laser Class 2050P Manual Online Activity Report. Laser Class 2050P Printer pdf manual download. Canon Printer User Manual. LASER CLASS 2050P All in One Printer pdf manual CANON LC2050P FAX MACHINE I LASER CLASS LC2050 I LC2050 I LC2050P. House moving contract, Lonely planet guide to nice, Quick reference guide to, Sample visual basic database code, Times university guide. Reload to refresh your session. Reload to refresh your session. Please call us for the most accurate information. Please contact us for options. Precision Roller is in no way affiliated, sponsored or endorsed by these copyright owners or their affiliates or dealers This website uses a secure server to encrypt all sensitive information. Page Count 3 Canon ImageCLASS MF4350d Repair iFixit. Canon ImageCLASS MF4350d Repair. A printer, copier, for Laser MFP Canon Cartridge 104. Free Manuals. 60,043. Solutions. 4,349. Devices. Alation program for canon laserAug 08, 2008.

Canon Laser Class 710 730i 720i Service and Parts Manual Ebook download as PDF FileCanon Laser Class 710 Service Manual Canon Laser Class 710 User Manual Free Product. Manual Canon Laser Class 710 User Manual Products and names mentioned are theENERGY STAR compliant, the LASER CLASS 2060 uses Canon s RAPID Fusing System. Manual Document Feed 3.5 x 1.75 88.9mm x 44.5mmDocument DocumentShopwiki has thousands of results in Canon laser class 2060p to choose from, find the bestWith a LASER CLASS 810 device, everyone in your workgroup has the power of a highMANUAL seen CANON LASER CLASS 2050P SERVICE MANUAL Sky launch the first multiFax dial numbers on canon laser class specific manual for a CanonDownload Honda lawn mowers quadra cut system manual model hrt.pdf. Download Clark tmg20 parts manual.pdf. Download Manual debeg 6348.pdf. Download Honda magna manual.pdf. Download Compair mako service manual.pdf.

Download Praxis ii chemistry study guide.pdf. Download Manual homelite st 155 135.pdf. Download User manual for cain and abel.pdf. Download Acticare manual.pdf. Download Guide for street magic.pdf. Download Homelite 5500 watt generator manual.pdf. Download Mcsa windows server 2012 complete guide.pdf. Download Gsx1300bk manual.pdf. Download Culligan twin water softener manual.pdf. Download Klr 650 service manual.pdf. Download Aeroflex nav750b manual.pdf. Download Hpc asd 32 manual.pdf. Download Radiometer abl 700 service manual.pdf. Download Carlin 702 burner manual.pdf. Download 80 hp mariner outboard repair manual.pdf. More PDF files File Type Extension pdf. Linearized No. PDF Version 1.7. Page Count 3. Page Layout SinglePage. Page Mode UseNone. Title Service Manual Canon Laser Class 2060p. Creator. Description. Subject service manual canon laser class 2060p. Creator Tool. Keywords service manual canon laser class 2060p. Producer TCPDF 6.0.083 . Document ID uuid3dfe073de2ca4009cb724535b193c873. Instance ID uuid3dfe073de2ca4009cb724535b193c873. Schemas Namespace URI.

Schemas Prefix pdf. Schemas Schema Adobe PDF Schema. Schemas Property Category internal. Schemas Property Description UUID based identifier for specific incarnation of a document. Schemas Property Name InstanceID. Schemas Property Value Type URI. Trapped False. Lastmanuals provides you a fast and easy access to the user manual CANON LASER CLASS 2050P. We hope that this CANON LASER CLASS 2050P user guide will be useful to you. Contents. Preface. xiv Legal Limitations on the Usage of Your Product and the Use of Images.. 116. Chapter 2. Loading and Outputting Paper. Registers custom paper sizes. This dialog box allows you to add new watermarks and edit the added watermarks. Using the Various Printing Functions Enter X and Y axis values between 50 and 50 The center of the paper is defined as 0 zero. Alternatively, drag the sliders on the bottom and the right of Preview to specify the position. This dialog box allows you to specify the settings for booklet printing. Enter the value of the distance 0 to 30 mm from the center line fold line in the middle of the paper. Using the Various Printing Functions At this point, you can select whether to reduce the size of the image to fit the remaining space. At this point, you can select whether to reduce the size of the image to fit the remaining space. This dialog box allows you to specify various settings for print processing. Contents. In any way cant Lastmanuals be held responsible if the document you are looking for is not available, incomplete, in a different language than yours, or if the model or language do not match the description. Lastmanuals, for instance, does not offer a translation service. Press Data Registration button. Press Set. Press up or down arrow to select 5. Printer Settings. Press Set. Press up or down arrow to select 2. Paper Size. Press Set. Press up or down arrow to select the size of paper loaded in paper tray. Press Set. Press down arrow to select MP Tray. Press Set.

Press up or down arrow to select paper size for multi purpose tray. Press Set. Press Stop to return to standby mode. Reference pages 1511 and 1512 in the fax manual. sorry, you dont have one Let me know if we can be of any more assistance. Tim Login to post Reference pages 51 through 528 for Speed Dialing, OneTouch Dialing, and Group Dialing. Speed Dialing must be set up before Group Dialing can be assigned. Group Dialing will accomplish the multiple recipients sending. The worn tires causes vibration on the separation plate. Replace both tires. Answer questions, earn points and help others. The problem we are having is with the ADF automatic document feeder is feeding through more than one sheet at a time. Its mainly a problem when sending out a large fax. I have diagrams electronic and the user manual hardcopy but still doesnt help me in figuring out what part needs to be replaced. If anyone has suggestions on getting the ADF fixed or the Service Manual for this machine it would be very much appreciated. Its exactly what I was thinking that we needed to replace. CANON 2050P MANUAL PDF PDF For PC. Setting Rx Mode I note stored memory will manually erased unless reconnect it within hour! Has been industry leader over decade, full Dual Access, goes beyond only supporting traditional providing flexibility performance an MFP, drivers other materials contained on downloaded software site. Provides the quality expect award winning multifunction devices. Canon LASER CLASS 2050P Facsimile User Manual. Makes no guarantees

kind regard programs, files, enabling scanning and faxing simultaneously, without, by Select language can choose 730i disclaims warranties. User Document canon 2050p fax manual Scanner User's Guide DR C SP Please read this before using unit. CANON 2050P MANUAL PDF Lady PDF.

<http://ninethreefox.com/?q=node/11444>